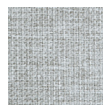


Soren Chair

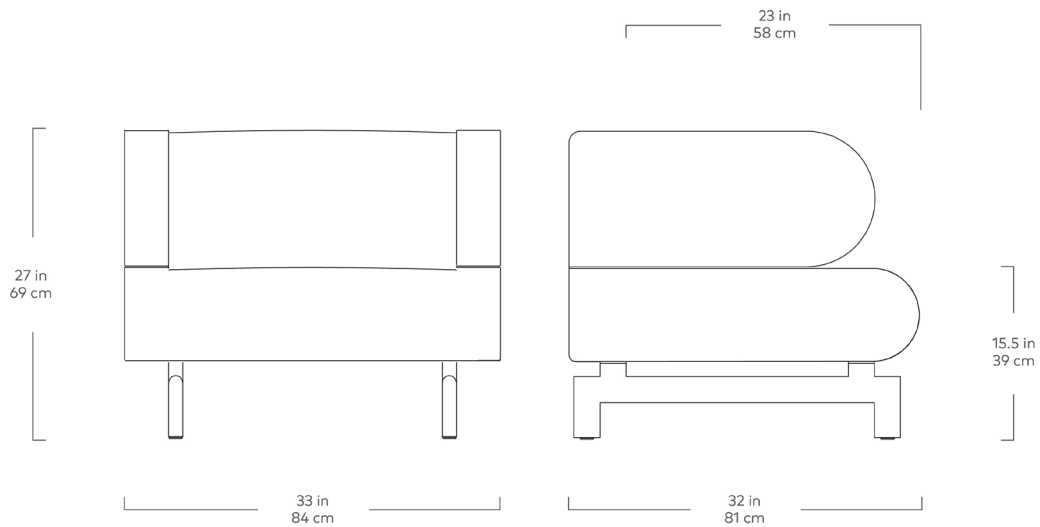


Dawson
Moon

The Soren Chair showcases a contemporary take on refined comfort. Sculptural design is the hallmark of the Soren Series: geometric forms, bold curves, and a black, steel base create a subtly playful aesthetic that has ample sophistication to hold its own as a centerpiece. The minimalist look of the tight seat and back, and the airy feel of the raised base complete Soren's modern, architectural design. The frame is constructed with kiln-dried FSC®-Certified hardwood in support of responsible forest management.

Design Trade Professionals: We aim to keep our designs in stock and ready to ship quickly for projects on a tight timeline. Designs may be customized with COM and alternate finishes (minimum quantities may apply). Visit guscontract.com for more information about our Trade & Contract programs.

Soren Chair



- Tight back, seat and arms.
- Upholstered with high resilience polyurethane foam covered in a Dacron wrap.
- Precision welded, oval tube steel base.
- Inset base is black, powder-coated steel.
- Frame is kiln-dried FSC®-Certified hardwood (FSC® C092551).
- All joints have been stress tested.
- Manufactured to meet California TB117-2013 fire safety standards without the use of flame retardant additives in the upholstery foam.

